

SIGNAL NAMES AND WIRING FOR DISPATCHER III V.2		
S22	D-RANGE	SIGNAL NAME
1	1	AUDIO-ENABLE
3	2	PTT/BID-IN
5	3	N/C
7	4	ALARM-AUDIO
9	5	RX-DATA-IN
11	6	ALARM-HOLD
13	7	CNL-SEL-OUT
15	8	PTT-OUT
2	9	CNL-SEL-IN
4	10	GND
6	11	FOOTSWITCH
8	12	PSK-OUT
10	13	ALARM-SENSE
12	14	GND
14	15	+13V8SW
16	-	-

SIGNAL NAMES AND WIRING FOR DISPATCHER III V.3		
S23	D-RANGE	SIGNAL NAME
1	1	RX-AUDIO
3	2	RSS-IN
5	3	METER-N/C
7	4	GND-N/C
9	5	RX-DISC-AUD
11	6	RADIO-PWR-ON
13	7	CH-OUT
15	8	PTT-OUT
2	9	CH-IN
4	10	ANALOG-GND
6	11	EXT-SPKR-N/C
8	12	TX-AUDIO
10	13	ALARM-SENSE
12	14	GND
14	15	+13V8
16	-	-

#TA064	#R22	#LINK
NOT-FITTED	150KX	0X
FITTED	-	-

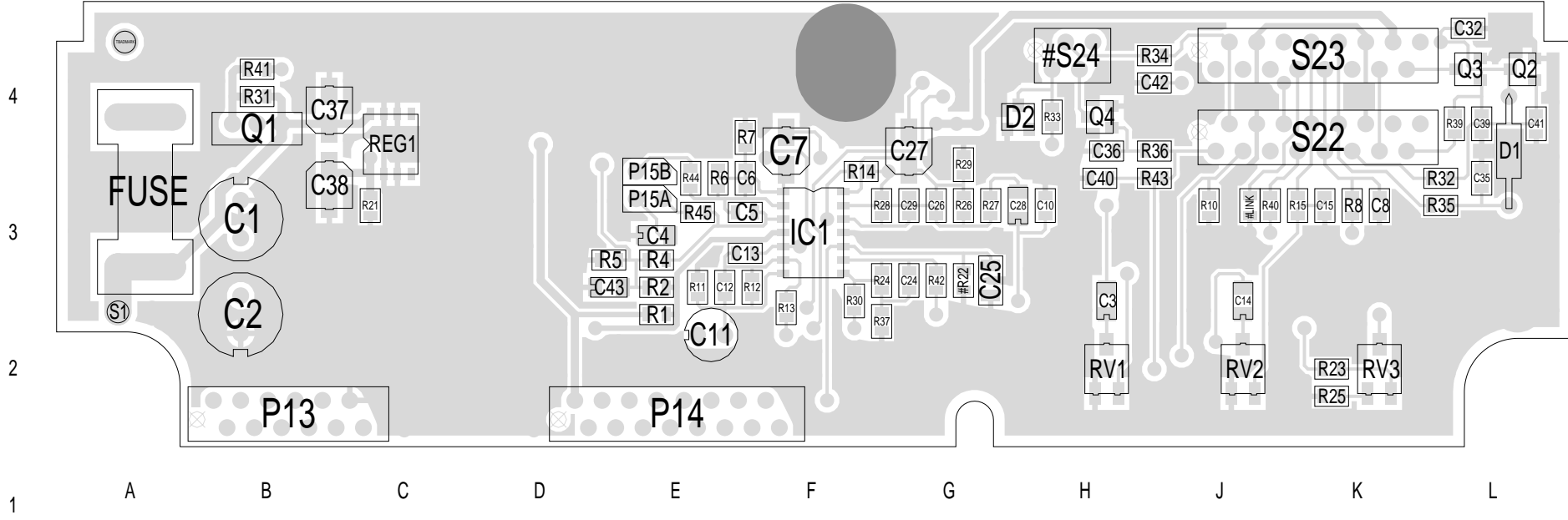
T2010 POWER CONNECTOR

T2010 CONTROL BOARD

- NOTES:
- DELETE ON T2000 CONTROL BOARD; 220-01377-03
 1.1 R535 2K7.
 1.2 R536 47K.
 1.3 R513 0X.
 1.4 D500 BAV70
 - LINK AE064 INTERFACE TO T2000 CONTROL BOARD AS INDICATED.

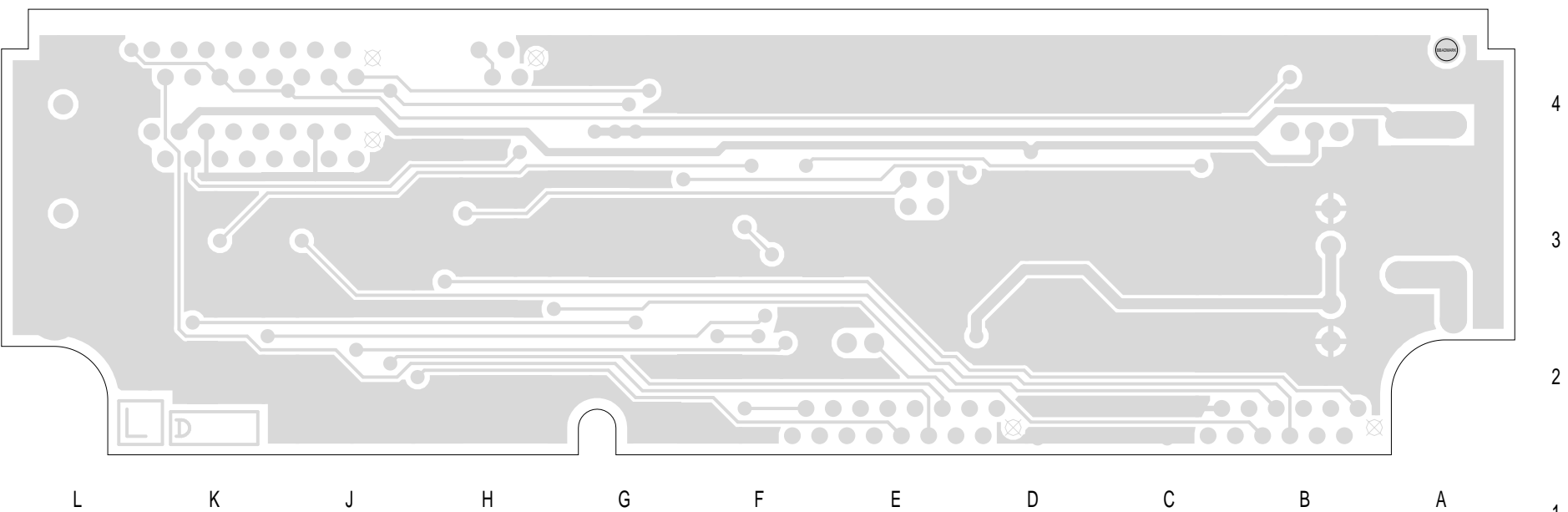
REV/ISS	AMENDMENTS	DRAWN	CHKD	D.O.	APVD	DATE
6B	ECO.770188 .770453	T.M.B.				
6A	ECO 770127. BOARD OUTLINE CHANGE	T.M.B.	H.O.	M.HALL	P.J.	22/12/98
5A	ECO 770076. CIRCUIT MODS	S.D.K.	H.O.	M.HALL	I.MCKEE	13.08.98
4B	S24 NOW #S24 MECH PARTS ADDED	DOUGLAS	M.HALL	M.HALL	I.MCKEE	19.02.98
4A	CHANGED TECHNOLOGY OF PCB TO SMD	M.HALL	M.HALL	M.HALL	S.CRAGG	28/10/97
3A	ADDED MECHANICAL PARTS TO BOM.	M.HALL	M.HALL	M.HALL	S.CRAGG	13/12/95
2C	ADDED MECHANICAL PARTS TO BOM.	M.HALL	M.HALL	D.ELDER	S.CRAGG	09/03/93

© TAIT ELECTRONICS
 TA064-01
 T2010 RAYWOOD INTERFACE
 IPN: 227-06401-06 ISSUE: C ID: 2.S.C. 1
 PROJECT: TA064-01 DESIGNER: H.OVERTOOM FILE NAME: a006416b FILE DATE: 9-Feb-00 NO.SHEETS: 1



TAIT ELECTRONICS IPN: 227-06401-06 ISS: A ID: 1.TA DATE: 14 Dec 1998
 TA064-01 PCB LAYOUT - TOP SIDE

Scale: 1:7:1 ; Rotation: 0 degrees



4
3
2
1

L K J H G F E D C B A

TAIT ELECTRONICS	IPN: 227-06401-06	ISS: A	ID: 2.BA	DATE: 14 Dec 1998
TA064-01 PCB LAYOUT - BOTTOM SIDE				

Scale: 1:7:1 : Rotation: 0 degrees